



# NAGA LIMITED RETAIL

No-4/213, Pudupatti, Padiyur (P.O.), Dindigul - 624 005



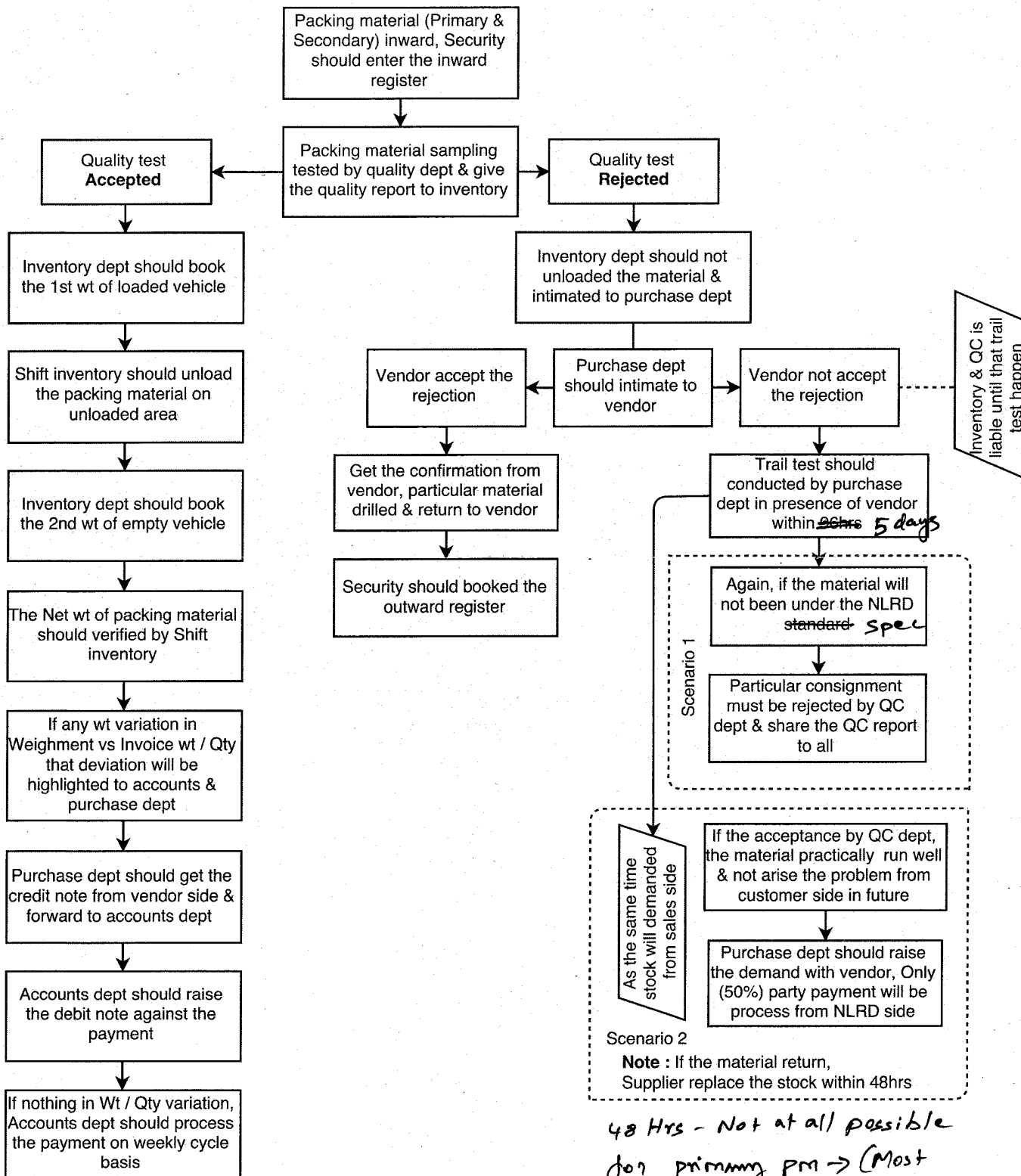
CV : NLRD

Department Name / Purchase, Inventory, Quality & Accounts

Ver : 1

## QUALITY REJECTION (PM)

*Quality - 2*



Note: If the supplier should not participate in trail test with 24hrs of material inward, The consignment should return to supplier within 8hrs

*5 days*

*48 Hrs - Not at all possible for primary PM -> (Most Highly 5 days can be fixed)*

*J. J. S. 10/02/18*

*P. Ravi*

*[Signature]*

Prepared by

Verified by

Accepted by